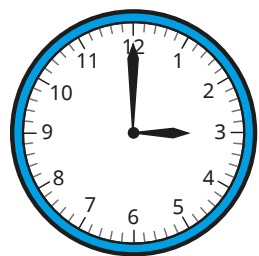


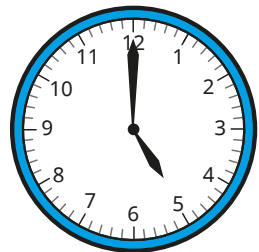
# Read time on a digital clock



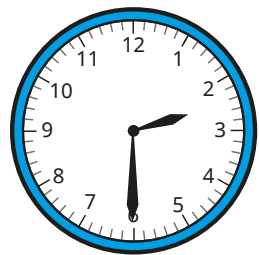
1 Match the analogue clocks to the digital times.



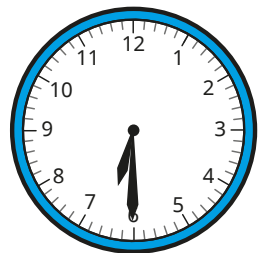
6:00



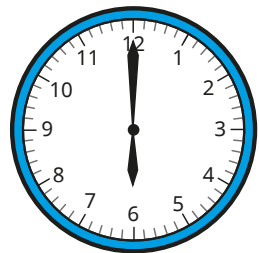
6:30



3:00



2:30



5:00

2 Write the times shown on the clocks.  
The first one has been done for you.

a) 1:40

20 minutes to 2

b) 1:20

c) 3:16

d) 8:07

e) 10:15

f) 1:45

g) 9:57

How did you know whether the time was **past** or **to** the hour?



3 Write the times on the digital clocks.

a) 10 minutes past 4

⋮

10 minutes to 4

⋮

b) 13 minutes past 9

⋮

13 minutes to 9

⋮

c) 27 minutes past 11

⋮

27 minutes to 11

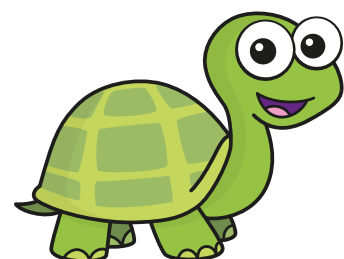
⋮

What do you notice?



4 Tiny is writing the time.

15:4



This is how you write quarter past 4 on a digital clock.

Do you agree with Tiny? \_\_\_\_\_

Explain your answer.

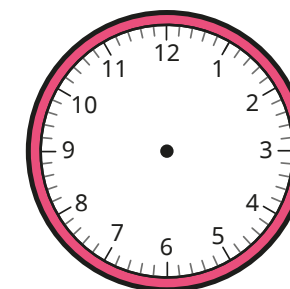
---

---

5 Draw hands on the clocks to show the times.

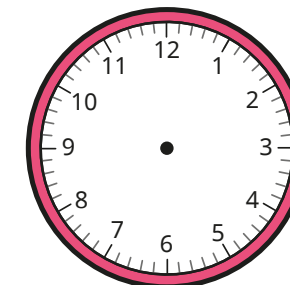
a)

3:08



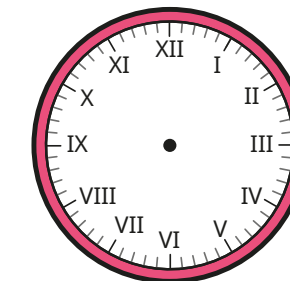
b)

6:18



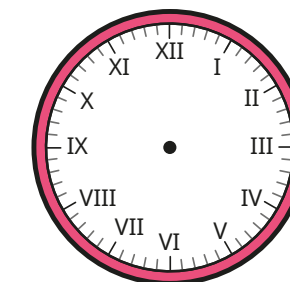
c)

9:42



d)

1:57



6 The time is 8 minutes to 12

Tommy and Sam write the time on a digital clock.

Tommy

12 : 08

Sam

11 : 92

a) What mistakes have Tommy and Sam made?

b) What is the correct time on a digital clock?

⋮

